



Timetable Anatomical Pathology Technology

PLEASE ARRIVE AT 1:30PM FOR REGISTRATION FOR ALL EXAMS

Level 3	28 th of March 2024 Health and Safety 14:00-15:00	T&D Seminar Room, AB4 UHS NHS FT, Southampton General Hospital SOUTH ACADEMIC BLOCK LEVEL B	Resist Level 3	No Resit	
	6 th of June 2024 Microbiology 14:00-15:00	T&D Tutorial Room, AC45 UHS NHS FT, Southampton General Hospital SOUTH ACADEMIC BLOCK LEVEL C		12 th December 2024 Microbiology 14:00-15:00	T&D Tutorial Room, AC33 UHS NHS FT, Southampton General Hospital SOUTH ACADEMIC BLOCK LEVEL C
	22 nd of August 2024 Anatomy & Physiology Part 1 14:00-15:00	T&D Tutorial Room, AC45 UHS NHS FT, Southampton General Hospital SOUTH ACADEMIC BLOCK LEVEL C		16 th of January 2025 Anatomy & Physiology Part 1 14:00-15:00	T&D Tutorial Room, AC33 UHS NHS FT, Southampton General Hospital SOUTH ACADEMIC BLOCK LEVEL C
	14 th November 2024 Anatomy & Physiology Part 2 14:00-15:00	T&D Tutorial Room, AC45 UHS NHS FT, Southampton General Hospital SOUTH ACADEMIC BLOCK LEVEL C		13 th February 2025 Anatomy & Physiology Part 2 14:00-15:00	T&D Tutorial Room, AC33 UHS NHS FT, Southampton General Hospital SOUTH ACADEMIC BLOCK LEVEL C
Level 4	18 th of April 2024 A&P Pathology 14:00-15:30	T&D Tutorial Room, AC45 UHS NHS FT Southampton General Hospital SOUTH ACADEMIC LEVEL C			
	11 th of July 2024 Governance 14:00-15:30	T&D Tutorial Room, AC45 UHS NHS FT Southampton General Hospital SOUTH ACADEMIC LEVEL C			
	21 st November 2024 Advance Mortuary Practice 14:00-15:30	T&D Tutorial Room, AC45 UHS NHS FT Southampton General Hospital SOUTH ACADEMIC LEVEL C			

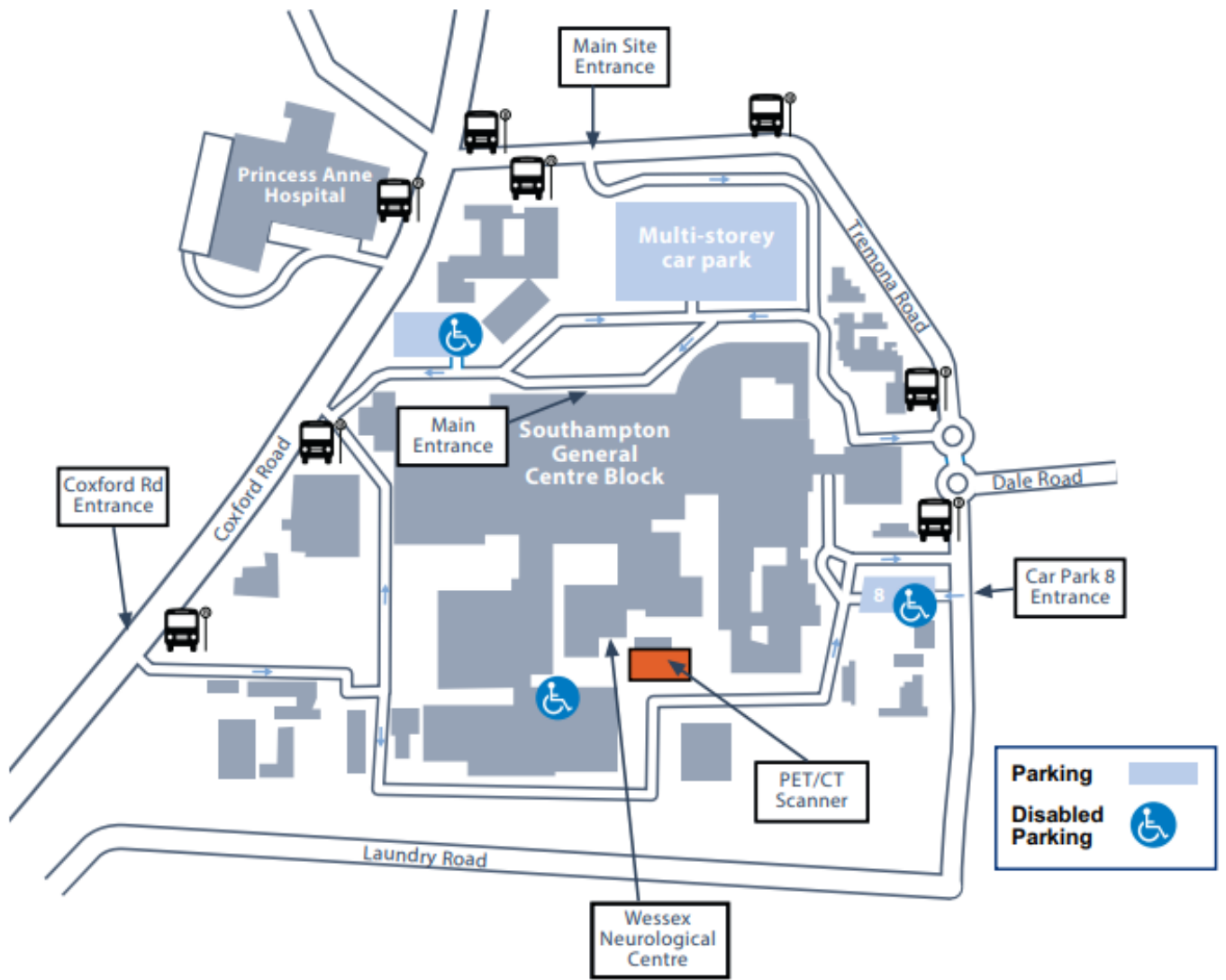
How to find Southampton General Hospital

Address: Southampton General Hospital, Tremona Road, Southampton SO16 6YD

3Words: ///oath.land.jumpy

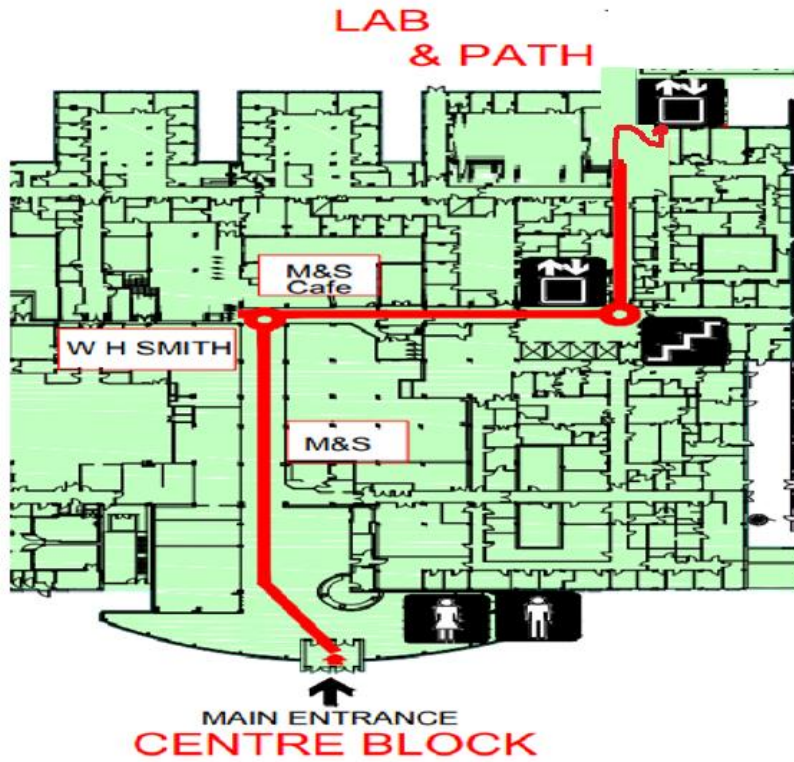
By Road	<p>From the M3 - Follow signs for Southampton A33 (not Southampton Docks). Follow signs for the A33, then join the A35 Winchester Road, turn right onto Dale Road and then right onto Tremona Road.</p> <p>From the M27 (East) - Take Junction 5 (Southampton Airport/Eastleigh) and take the first exit off the roundabout. At the major intersection with The Avenue, continue straight along Burgess Road. Turn right and immediately left onto Winchester Road, turn right onto Dale Road and then right onto Tremona Road</p> <p>From the M27 (West) - Take Junction 3 and follow signs for M271 City Centre and The Docks. At roundabout turn left onto A35 Redbridge Road. Follow signs for the A35 and University of Southampton then continue along Teboura Way onto Winchester Road, turn right onto Dale Road and then right onto Tremona Road</p> <p>Public Transport</p>
By bus	<p>Several local bus routes serve the hospital sites. They are the Xelabus X11, Bluestar 7, Bluestar 17, City Red Three (First Bus), Unilink U6H.</p> <p>The bus stop is located on Tremona Road opposite the Main Hospital entrance.</p> <p>There is not an onsite bus stop.</p>
By rail	<p>The closest station is Southampton Central which is approximately 2.3 miles from the hospital. You can catch the Bluestar 17 and City Red Three buses from the station. Both continue to Southampton General Hospital and Princess Anne Hospital.</p> <p>There are also several taxi services which run from the station.</p>
Car Parking	<p>There are 3 car parks on site which are used by Southampton General Hospital</p> <p>The car parks are called the Blue Car Park, the Orange Car Park.</p> <p>The Orange Car Park is to the front of the building facing the main hospital entrance.</p> <p>The Orange Car Park is on 2 levels with the lower level having the accessible parking Blue Badge bays.</p> <p>The upper level also contains the emergency helicopter landing pad.</p> <p>Charges apply to all users of these car parks. Please take the ticket with you</p>

If you get lost on site or unsure where to go or how to get here, our mortuary team will help you with any enquiries
please call 02381206306.



How to find the Mortuary

If you get lost on site or unsure where to go or how to get here, our mortuary team will help you with any enquiries please call 02381206306.



USE LIFT OR STAIRS
TO GO TO A LEVEL
FOLLOW SIGNS FOR
MORTUARY/VIEWING
ROOM